

JPM 2/80

Oxford North (Jcn) S226

Queries on locking table derived from chart

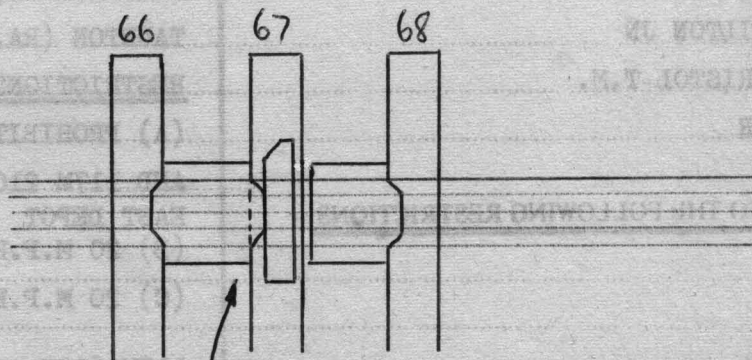
- 33 Shown as locking 36.37 dead. Seems more likely to lock both these b/w - supporting evidence is that 33 locks 84 dead. 84 is led by 37, thus if your table is correct then there would be no point in 33 lock 84
- 34/37 Shown as 34 led by 30w37R. Seems more likely to be; 37 led by 36w34R. It is also possible that 37 would lock 30 b/w when 34R to hold the road (37 acting as "LRB" to hold 30.)
- 31 Shown as led by 23w21R. This cannot be and would suggest the following; 21 led by 23w31R.
- On the same principle that a disc is led by the disc ahead when the points through which the second disc reads is reverse, the following amendments seem likely.
- *57 led by 56w52R, and by (42w29R)
- *66 led by 67w68R.

It is also usual in these cases for the disc which leads up to the second disc to lock the relevant points b/w. Thus would seem likely that 21 lock 23 b/w,

"	57	52	However this locking does not have to be provided
	66	68	for reasons shown below after some doodling!

In fact what you have put down is correct, but should be written as *above. If 66 is pulled first, then 68 is locked normal, because the slider on 67 is in the normal position. Aha, but you can't pull 67 to break down this condition, as 68 is normal and 67 is led by 68! Thus in a cunning way 66 locks 68 both ways. Interesting idea!

66
 DISC AT
 No. 35
 NIL
 OR
 68
 67



COND. ONLY - NOT DEAD LOCK